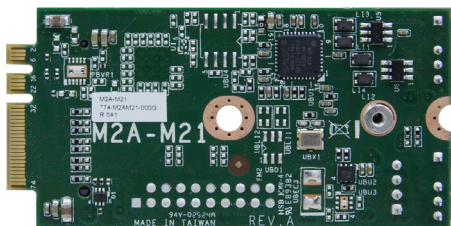
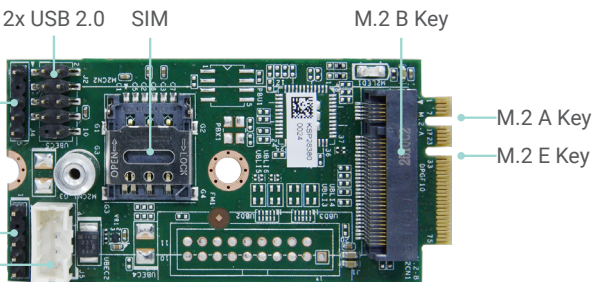
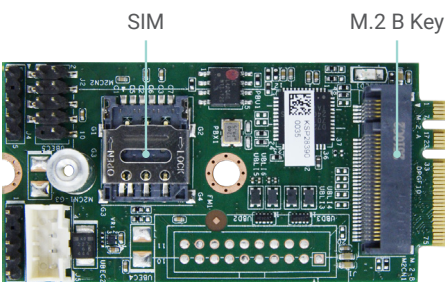


M2A-M21

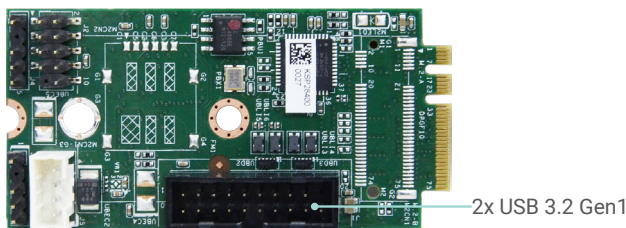
Module Boards



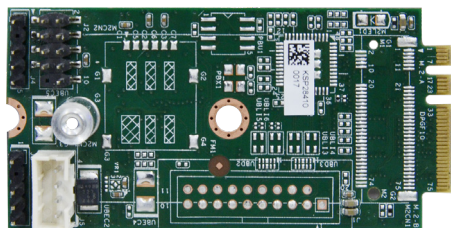
(M2A-M21-000G)



(M2A-M21-100G)



(M2A-M21-200G)



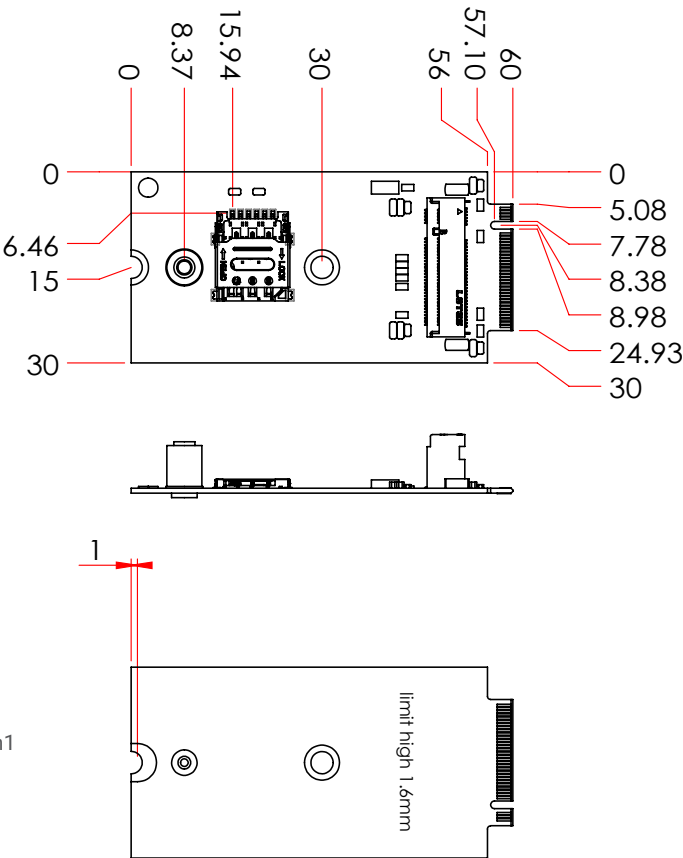
(M2A-M21-300G)

SPECIFICATION

CHIP	USB3.0 HOST CONTROLLER, UPD720202K8
FEATURES	Support up to 1 M.2 B Key(PCIE/USB3/USB2) (2242) with SIM slot for 4G/5G LTE module, and WIFI module
PORT	Support up to 2 USB 3 Gen1 / 4 USB2.0 headers
TEMPERATURE	Operating: -40°C to 85°C Storage: -40°C to 85°C
HUMIDITY	5% to 90%
DIMENSIONS	30 x 60 mm (Stand off at 30 x 30 mm)

NOTE: The function depends on the source signal from the motherboard.

MECHANICAL DRAWING



ORDERING INFORMATION

Part Number	Description
770-M2AM21-000G	M.2 A/E key-to-M.2 M/B key (PCIE) (3060, Stdoff-3030) adapter wi SIM slot, 4 USB2.0
770-M2AM21-100G	M.2 A/E key-to-M.2 M/B key (USB3/2) (3060 Stdoff-3030) adapter wi SIM slot, 4 USB2.0
770-M2AM21-200G	M.2 A/E key to USB module (3060, Stdoff-3030) with 2 USB3.2 Gen1, 4 USB2.0
770-M2AM21-300G	M.2 A/E key-to-USB adapter 3060, Stdoff-3030 with 4 USB2.0